

25 North 100 East, St. George, Utah



PROPERTY INFORMATION

- Lease Rate: \$1.00 PSF
- Size: 7,991 SF Available
- Central business district location
- Great visibility and parking
- Retail or office use
- Building signage available
- Immediate occupancy
- Suite 102 - 5,665 SF Available
- Suite 104 - 2,326 Available



COMMERCE CRG
1363 East 170 South, Suite 100
St. George, Utah 84790
Tel 435-673-7111 Fax 435-673-7153
www.commercecrg.com

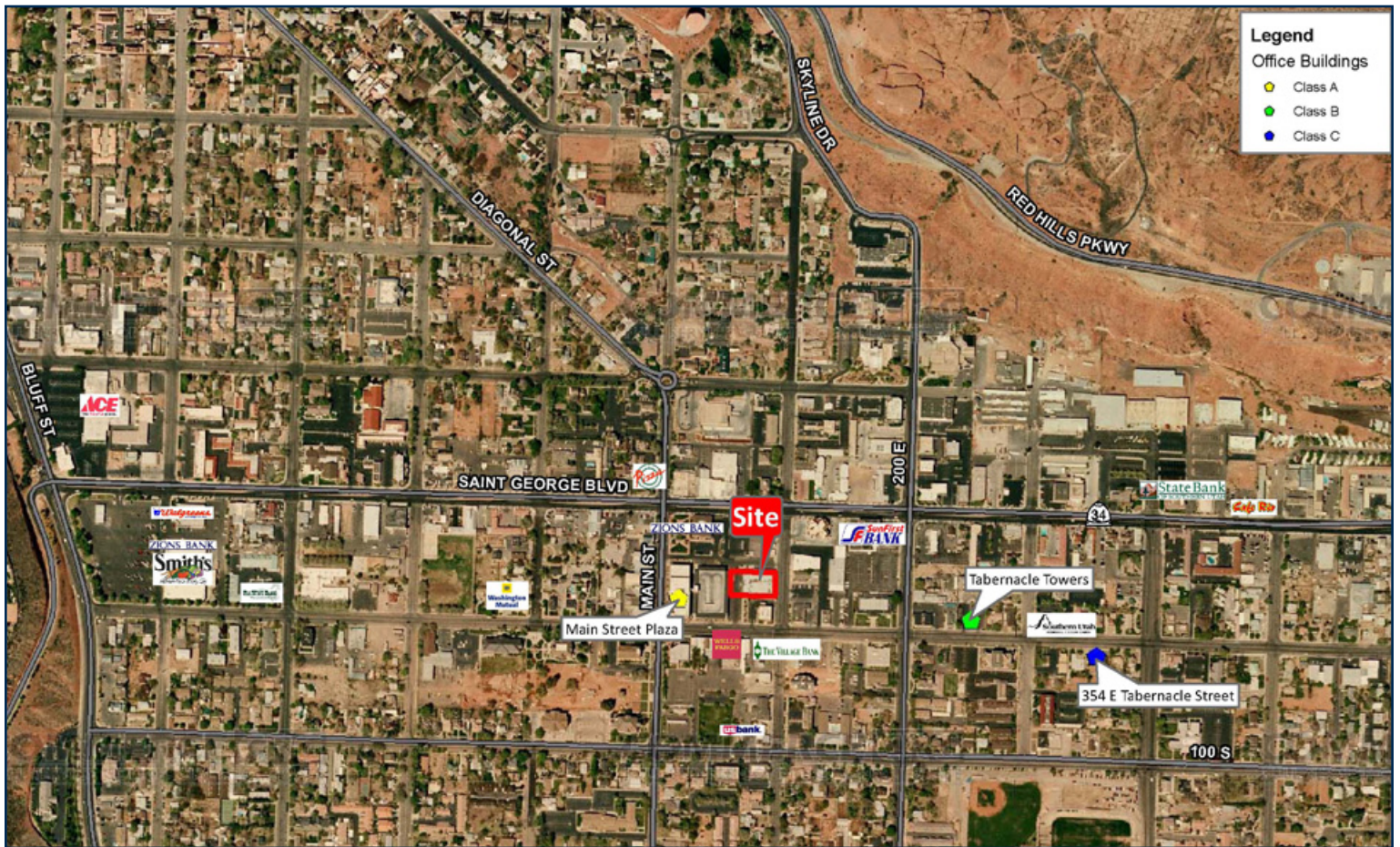
Travis Parry
435-673-7111
tparry@commercecrg.com



OFFICE | INDUSTRIAL | RETAIL | LAND | INVESTMENT

©2008, Commerce CRG. This statement, with the information it contains, is given with the understanding that all negotiations relating to the purchase, renting, or leasing of the property described above shall be conducted through this office. No warranty or representation, express or implied, is made as to the accuracy of the information contained herein, and same is submitted subject to errors, omissions, change of price, rental or other conditions, withdrawal without notice, and to any special listing conditions imposed by our principals. Some aerial photography by DigitalGlobe or Aerials Express.
path: J:\1 - Projects\St George\Parry_Travis\1 - Flyers\25 N 100 E

25 North 100 East St. George, Utah



DEMOGRAPHICS	1 Mile	3 Mile	5 Mile
POPULATION			
2008 Estimated Population	8,426	41,825	68,407
2013 Projected Population	9,193	49,260	81,405
HOUSEHOLDS			
2008 Estimated Households	3,253	15,763	25,244
2013 Projected Households	3,630	18,930	30,597
2008 Est. Average HH Income	\$ 50,563	\$ 55,950	\$ 58,669
2008 Est. Median HH Income	\$ 36,586	\$ 43,538	\$ 46,405
2008 Est. Per Capita Income	\$ 20,996	\$ 21,784	\$ 22,107
Demographics provided by: SitesUSA			

Travis Parry
435-673-7111
tparry@commercecrg.com

COMMERCE CRG
1363 East 170 South, Suite 100
St. George, Utah 84790
Tel 435-673-7111 Fax 435-673-7153
www.commercecrg.com

An independently owned and
operated member of the
CUSHMAN & WAKEFIELD
ALLIANCE